



2019 ~ 2021



Tamkang University
Chinese Language Center

淡江大學華語中心

“

The best part of
Tamkang Chinese Language Center is
that they have the best teachers who
has professional teaching skills.
Teachers will help you enhance
Chinese linguistic sense which will
make you learn Chinese faster.

When I first came to Taiwan, I wasn't
familiar with the Chinese language
at all.

But learning Chinese with my best
teachers in Tamkang University
Chinese Language Center, now I'm
planning to apply for graduate school
in Taiwan!

Thank you all & TKUCLC!!

”

Amber Kim-youtuber

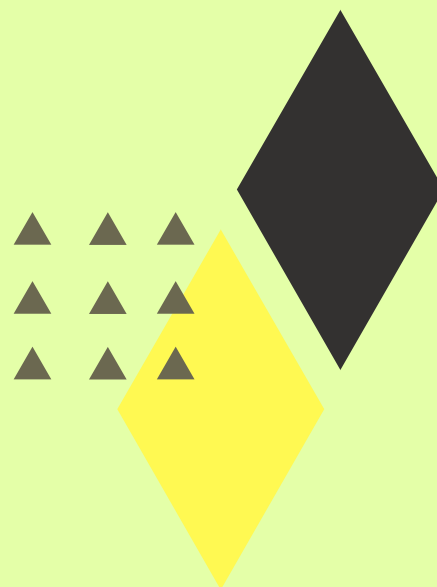


TABLE OF contents

01	Tamkang University Chinese Language Center	11	Chinese & Tourism One-day Program
03	Regular Chinese Language Program	12	Chinese Tryout Half-day Program
05	Intensive Chinese Enhancement Program	13	WHY TKUCLC?
07	Chinese Culture Summer Program	14	Taiwan Scholarships
08	TOCFL Passing Language Program	15	Modern Chinese
09	Private Chinese Language Program	17	Registration
10	Customized Chinese Language Program	19	Program Summary

Start your adventure here...

Tamkang University

Tamkang University was founded in 1950, and is the best private university in Taiwan. The University provides a well-established and trustworthy Chinese Language Center. Tamkang University Chinese Language Center, is a recognized level A language center by the Ministry of Education, ROC.

The Chinese Language Center of Tamkang University was established in 1991. It promotes the Chinese language and provides a good learning environment for people from all around the world. We encourage international students to interact with Taiwanese students, and further experience Chinese culture.



Chinese Language Center!

We pride ourselves for our well-experienced Chinese teachers, who cater for students of different ages and levels. We provide students with not only a deeper understanding of Taiwanese culture and Chinese literature, but also an unforgettable experience in Taiwan.

According to the Institute of Economics and Peace's annual Global Peace Index 2018, Taiwan is ranked the sixth safest country in the Asia Pacific. Taiwanese are friendly and willing to help out whenever you're in need.

Our teaching is at a high standard, in order to encourage and help students achieve their language goals. Outside of class, students will have numerous opportunities to immerse themselves to practice speaking Mandarin with the friendly citizens of Taiwan.

Explore the beauty and natural charm of Taiwan, and surround yourself with Chinese culture!

**SAFE
CAMPUS**

**ENTERPRISE'S
FAVORITE**

**OLDEST
PRIVATE
UNIVERSITY**

TOP 3 CLC

**AWARDED BY
MINISTRY OF
EDUCATION**

**FULL SUPPORT
FROM
TEACHERS &
STAFFS**



Regular Chinese Language Program (RCLP)

Want to stay in Taiwan for a longer period?
Serious want to master the Chinese Language?

Tamkang University Chinese Language Center (TKUCLC) has designed the program suitable for students that are planning to stay for a longer period or hold a residence permit. The 15-week program starts on first week of every month, and meets 5 days per week, 3 hours per day.

In total, TKUCLC offers 8 different levels. Students are required to take the replacement test when they arrive and are placed according to their ability. Each class has a teaching plan that is designed in a fun and interactive way. They ensure student-focused learning with a highly qualified teacher.

Apply now!



- Start of Terms: First Week of Every Month
- Course Duration: 3 Weeks - 15 Weeks
- Class Hours: 3 Hours per day, 15 hours per week
- Class Levels: 8 Levels
- Major Materials:
 - Modern Chinese
 - A Course in Contemporary Chinese
- Locations: Taipei Campus
- Fees: 15 weeks: NT\$28,000 (insurance included)
3 weeks: NT\$7,500 (insurance excluded)

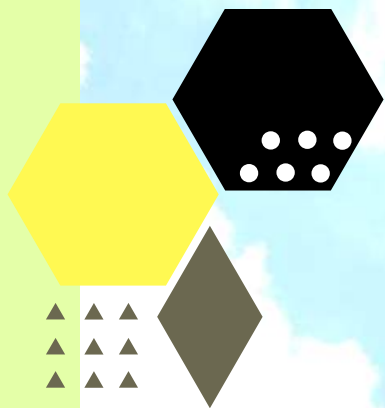




longer Study Plans



seriously want to master
the language



Fun Field Trip

TAIPEI 101



Want to improve your Chinese during the Spring/Summer break? Want to make new friends with people around the world?

This program is perfect for students who want to improve their Chinese, meet new friends around the world and see the sights in Taipei. Well-trained counselors are assigned to each class to accompany students throughout the program!

Special bonus for students take six-week program!
3 days outside-the-city trip is included to explore the beauty of Southern Taiwan!

Intensive Chinese Enhancement Program (ICEP)

2020

SPRING-TAIPEI CAMPUS

2 WEEKS

- MARCH 08 - MARCH 21

SUMMER-TAMSUI CAMPUS

3 WEEKS

- JULY 05 - JULY 25
- AUGUST 02 - AUGUST 22

6 WEEKS

- JULY 05 - AUGUST 15

2021

SPRING-TAIPEI CAMPUS

2 WEEKS

- MARCH 07 - MARCH 20

SUMMER-TAMSUI CAMPUS

3 WEEKS

- JULY 04 - JULY 24
- AUGUST 01 - AUGUST 21

6 WEEKS

- JULY 04 - AUGUST 14

	Mon	Tue	Wed	Thu	Fri	Sat/ Sun
08:00-09:00	Breakfast					
09:10-12:00	Chinese Classes: focus on grammar, writing, reading and daily conversation skills				Weekly field trip: Fun exploring Taipei City!	Free Time!
12:00-14:00						
14:10-16:00						
16:10-18:00	Culture Classes / Group time					
18:00-19:00	Supper					
19:00-22:00	Group gathering, free time!					

- Program Duration: Spring (2 weeks) Summer (3/6 weeks)
- Class Hours:
 - Chinese 20 hours/week
 - Culture 2-4 hours/week
 - Field Trip 8 hours/week
- Accommodations: Included
- Fees:
 - 2 weeks: NT\$32,000 (Meals not included)
 - 3 weeks: NT\$40,000 (Meals included)
 - 6 weeks: NT\$65,000 (Meals included)





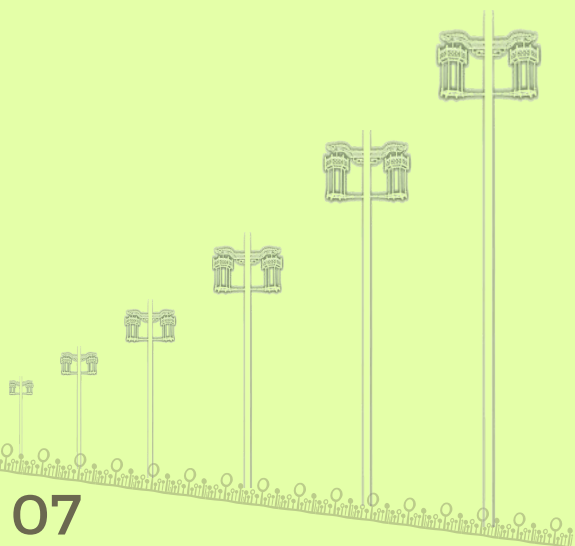
Chinese Culture Summer Program (CCSP)

Wish to experience a touch of Chinese language learning, culture experiencing and exploring Taipei through half-day mini trips in the same week?

Our Chinese Culture Summer Program (CCSP) is suitable for adventurous students willing to experience Chinese through different aspects. This includes Chinese language learning in the morning, and cultural experiencing or Taipei mini trip travelling in the afternoon.

This special program is only available during summer period (July to August). Based on your travelling plan, you may choose to join us in between 1 to 8 weeks. No accommodation is included as we would like you to maximize your freedom in experiencing Taiwan!

- **Start of Programs:** Summer (July/August)
- **Course Duration:** 1 - 8 Weeks
- **Weekly Package (Mon-Fri):**
 - Morning: Chinese Class (3 hours per day)
 - Afternoon: Culture or Field Trips: (3 hours per day)
- **Major Materials:**
 - Modern Chinese
 - A Course in Contemporary Chinese
- **Locations:** Taipei Campus
- **Fees:** NT\$6,000 per week (Include: insurance, entrance fees, travel expenses, lunch)





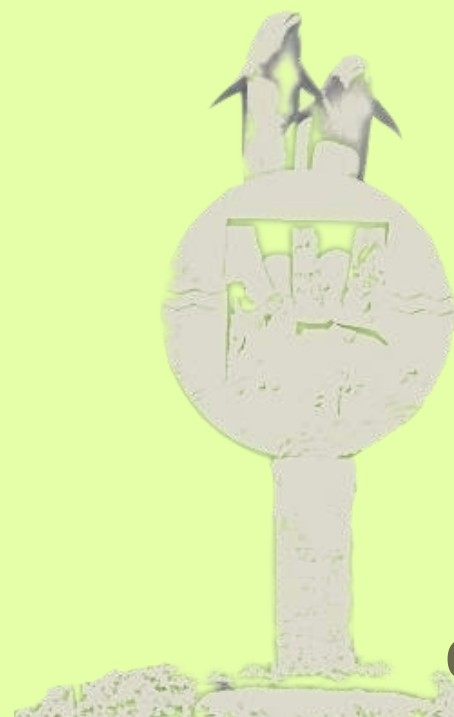
Looking for a highly effective program that will assist you pass TOCFL Band A Level 1 or Level 2 exam?

Due to the increasing need for the Chinese Language Proficiency Certificate, our center has designed the new program "TOCFL Passing Language Program" to assist students passing the exam within 15 weeks preparation. The program includes condensed Chinese classes in the morning and Monday/Wednesday and Friday afternoon tutoring sessions.

If, by slim chance, students fail the exam, our center will refund 50% of tuition fee under the condition that students with class absence must less than 15 hours and the class result must higher than 85 grades.

TOCFL Passing Language Program (TPLP)

- Start of Programs: July / January
- Course Duration: 15 Weeks
- Class Hours: 3 hours per day, 15 hours per week
- Tutor Sessions: Mon/Wed/Fri afternoon, 2 hours per session
- Major Materials: Modern Chinese
- Locations: Taipei Campus
- Fees: NT\$45,000 (Include: insurance, materials)





Private Chinese Language Program (PCLP)

Are you hoping to gain confidence in professional languages? Looking to improve your Chinese ability for academics, for travel or for leisure purposes?

Private Chinese Language Program (PCLP) is designed to build the confidence and improved the Chinese language performance of individuals by supporting their professional, academic and personal developments.

The private classes curricular is designed based on students' learning objectives, preferred time and other requirements, that maximum progress in the shortest possible time.

- Start of Terms: Anytime (3 weeks pre-notice is required.)
- Program Length: Min 6 hours per week, 20 hour per session
- Major Materials: Modern Chinese
- Locations: Taipei Campus
- Fees: 1-on-1: NT\$600/per person per hour
1-on-2: NT\$350/per person per hour
1-on-3: NT\$300/per person per hour
- Additional Fee: Designated Materials: NT\$100/per hour





Wish to arrange an unforgettable Chinese and Culture learning trip for your students? Wish to visit Taipei must-see sights?

Our Customized Chinese Language Program (CCLP) is what you are looking for. Chinese learning, culture classes, university touring, must-see places, accommodations and meals, all you can think of, we can arrange it for you.

Just give us an email with all must-have items and we will work out a complete course arrangement that best suit your requirements.

Customized Chinese Language Program (CCLP)





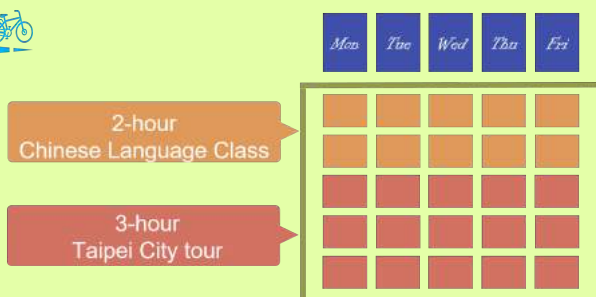
Chinese & Tourism One-Day Program (CTOP)

Wish to experience how Chinese learning and travelling blended together in harmony?

The program is designed for participants to learn basic Chinese daily conversations and vocabularies in the morning and in the afternoon, immerse themselves in our local culture tours, such as visiting historic buildings and museum in the Taipei city.

Currently, our center has design five routes for participants to choose. This includes Beitou district, Dadaocheng district, Ximending district, Tamsui district and Taipei 101. We are now working on more featured tour packages such as culinary journeys. Follow TKUCLC on social media to keep up-to-date with the latest touring package announcement!

- Fee: 3-5 participants: NT\$2,000 per person
5 participants onward: NT\$1,500 per person





Wish to learn basic Chinese vocabularies with best friends?
Wish to understand basic daily conversations before travelling start?

The Chinese Tryout Program is designed for groups who would like to explore the Chinese language and feel more confident in speaking Chinese before travelling.

The course content includes basic daily conversations such as self-introductions, street dialogues and basic counts. Our instructors provide a variety of classroom fun activities to make group language learning experience the most effective possible.

- **Fees:**
- Below 15: NT\$600 / per participant
- 16-20: NT\$500 / per participant
- 21-30: NT\$400 / per participant
- 31-50: NT\$350 / per participant
- 51-150: NT\$300 / per participant
- Above 151: NT\$250 / per participant

Chinese Tryout Half-day Program (CTHP)



WHY TKUCLC?

- Majorities receive
- MOE certificate
- >70% obtain
- Master degree



Qualified Teachers



Professional Teaching

- Design sounding teaching plan
- Boost students' learning ambitions

- Easy Access through MRT system
- Cozy learning space



Convenient+ Cozy Surrounding



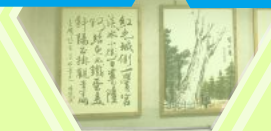
Counselor Caring System

- Accompany students through out the program
- Guide students to explore Taipei life!

- Taipei, one of the Safest City in Asia
- 24 Hours security guard standby



Safe Environment



TAIWAN SCHOLARSHIPS

Make your study easier in Taiwan!

MOFA Taiwan Scholarship

The MOFA Taiwan Scholarship continues to encourage outstanding students to pursue academic degrees in Taiwan and to deepen their understanding of Taiwan's academic environment. Therefore, enhancing exchanges and building friendships between Taiwan and their home nations. (These guidelines are not applicable to students from mainland China, Hong Kong and Macau). More details, please refer to the official website: <https://taiwanscholarship.moe.gov.tw>

Scholarship	Amount	Payment Method
The pre-degree Mandarin Language Enrichment Program (LEP)	NT\$25,000	Monthly Stipend
Degree Program	NT\$30,000	Monthly Stipend

Eligibility

- Is a high school graduate or above with an excellent academic record, of good moral character and has no criminal record.
- Is not a national of the Republic of China (Taiwan).
- Is not an overseas compatriot student.
- Has never attended an educational institution in Taiwan at the same level of degree or LEP that he/she intends to apply for
- Is not an exchange student through any cooperation agreement between a foreign university/college and an educational institute in Taiwan while receiving the Scholarship.
- Has not previously had a Scholarship revoked by an ROC government agency or other relevant institution.

Application Process

- Applicants should submit documents to the ROC diplomatic mission responsible for their home country.

TKUCLC Scholarship and TOCFL process fee subsidy

Academic Scholarship NT\$ 15,000

- Each year, Tamkang University Chinese Language Center provides NT\$ 15,000 scholarship for several outstanding students who are recommended by teachers.

Volunteering Scholarship – NT\$ 5,000

- Students who are involved in volunteering and have to perform at least 30 hours of community service. Students need to show proof of volunteering for the application.

TOCFL test fee Subsidy

- Students who passed the TOCFL pre-exam and apply for TOCFL test will receive a subsidy for the process fee.

always
challenging
always
improving

MODERN CHINESE

Chinese is definitely worth exploring.





Tamkang University Chinese Language Center, plus other six university-based Chinese Language Center, has officially launch new Chinese Teaching System with newly published textbook : MODERN CHINESE!

Modern Chinese, provides a complete set of systematic Chinese learning materials with complete ONLINE supporting resources including class presentations, activity sheets and teaching guidelines. By incorporating up-to-date technologies, such as Quizlet, Kahoot and AR, learning Chinese can be so easy and so much fun!

Well, learning Chinese can be happened anytime you want! Students can listen to the audios by simply scan the QR code for direct access to the database or they can try Quizlet to practice vocabularies. Even more, students can try new E-activity sheets designed by teachers to enhance learning result!

Visit our DEMO website (<https://goo.gl/vASist>) or simply scan the QR code to find out more!



REGISTRATION

Regular Chinese Language Program (RCLP)



STEP 1

Complete Online Registration

Complete the online application form through below:

1. QR Code



2. <http://www.clc.tku.tw>



STEP 2

Upload documents

For admission letter, upload below documents when completing the online registration.

- (1) A photocopy of passport
- (2) Diploma Copy
- (3) Transcript
- (4) Financial statement within 3 months of US\$2,500

Intensive Chinese Enhancement Program (ICEP)



STEP 1

Complete Online Application

Complete the online application form from our website (<http://www.clc.tku.tw>)



STEP 2

Upload documents

Upload below documents when completing the online application

- (1) passport
- (2) a digital photo

Chinese Culture Summer Program (CCSP)



STEP 1

Complete Online Application

Complete the online application form from our website (<http://www.clc.tku.tw>)



STEP 2

Wire Transfer deposits (USD\$210)

Beneficiary Bank: FIRST COMMERCIAL BANK,
TAIPEI, TAIWAN
SWIFT Code FCBKWTWTPXXX
Beneficiary: TAMKANG UNIVERSITY
Beneficiary A/C: 162-10-004528
Bank Branch: Xinyi Branch
Bank Address: No. 7, Sec 3, Xinyi Rd., Da'an Dist.,
Taipei City 106, Taiwan (R.O.C.)

Other Programs Registration Process



Please contact us for more details

E-mail: clc@clc.tku.edu.tw

TEL: 02-2321-6320 #8876, #8857



STEP 3

Apply for Visa

You may collect your admission letter after authentication process. Please take the letter to any Taiwan diplomatic mission for Visa application.



STEP 3

Wire Transfer deposit (USD\$210)

Beneficiary Bank: FIRST COMMERCIAL BANK,
TAIPEI, TAIWAN
SWIFT Code FCBKTPWXXX
Beneficiary: TAMKANG UNIVERSITY
Beneficiary A/C: 162-10-004528
Bank Branch: Xinyi Branch
Bank Address: No. 7, Sec 3, Xinyi Rd., Da'an Dist.,
Taipei City 106, Taiwan (R.O.C.)



STEP 4

EMAIL Bank Remittance slip

Email/Fax the bank remittance slip. (Email subject: ICEP_Participant's name.)

A confirmation email will be issued upon receive.

REFUND POLICY

As per Regulations of Implementation of Continuing Education at Institutions of Higher Education, the following Policies and Procedures apply to refund after the payment has been finalized. The payment includes tuition fees, registration fees and other related fees.

1. Withdraw before the course commence: 90% refund.
2. Withdraw after the course commence, before exceeding 1/3 of class duration, 50% refund.
3. Withdraw after 1/3 of class duration: no refund.

If the institute failed to started the course in designated time, all finalized payment has to be refund in full.

No refund or make-up classes would be provided if the class cancellation is announced by Directorate-General of Personnel Administration, Executive Yuan due Force Majeure circumstances.

Program Summary



RCLP Pg03

Regular

CHINESE LANGUAGE PROGRAM

Stat of Terms: First Week of Every Month

Course Duration: 3-15 Weeks

Class Hours: 3 hours per day, 15 hours per week

Major Materials: Modern Chinese

A Course in Contemporary Chinese

Location: Taipei Campus

Fees: 15 Weeks NT28,000 (Insurance Included)
3 Weeks NT7,500 (Insurance Excluded)



ICEP Pg05

Intensive

CHINESE ENHANCEMENT PROGRAM

Program Duration:

- Spring: 2 Weeks - Taipei Campus

- Summer 3/6 Weeks - Tamsui Campus

Class Hours per week: Chinese 20 Hours

Culture 2-4 Hours

Field Trip: 8 Hours

Accommodations: included

Fees: 2 Weeks NT32,000 (Meals Excluded)

3 Weeks NT40,000 (Meals Included)

6 Weeks NT65,000 (Meals Included)



CCSP Pg07

Chinese Culture

SUMMER PROGRAM

Start of Programs: Summer (July/August)

Course Duration: 1-8 Weeks

Weekly Package (Mon-Fri):

- Morning: Chinese Classes (3 Hours per day)

- Afternoon: Culture or Field Trips (3 Hours per day)

Major Materials:

- Modern Chinese

- A Course in Contemporary Chinese

Location: Taipei Campus

Fees: NT\$6,000 per week (Include insurance, lunch)



TPLP Pg08

TOCFL Passing

LANGUAGE PROGRAM

Start of Programs: July / January

Course Duration: 15 Weeks

Class Hours: 3 hours per day, 15 hours per week

Tutor Sessions: Mon/Wed/Fri afternoons

2 Hours per session

Major Material: Modern Chinese

Location: Taipei Campus

Fees: NT\$45,000 (Include Insurance and materials)



PCLP Pg09

Private

CHINESE LANGUAGE PROGRAM

Start of terms: Anytime (3 weeks pre-notice required)

Program Length:

Min 6 Hours per week and 20 hours per session

Major Materials: Modern Chinese

Location: Taipei Campus

Fees:

1-on-1: NT600 per person per hour

1-on-2: NT350 per person per hour

1-on-3: NT300 per person per hour

Additional: Designated Materials: NT100/per hour



CCLP Pg10

Customized

CHINESE LANGUAGE PROGRAM

Build your own Program to your Specification!



CTOP Pg11

Chinese & Tourism

ONE-DAY PROGRAM

Start of Term: Anytime (On-line application required)

Daily Package:

- Morning: 3 Hours Chinese Classes

- Afternoon: 2 Hours Mini-Trip

Group Size: 3 Participants onward

Fees: 3-5 Participants: NT2,000 per person

5 Participants: NT1,500 per person



CTHP Pg12

Chinese Tryout

HALF-DAY PROGRAM

Start of Term: Anytime (3 weeks pre-notice required)

Fees:

- Below 15: NT600/per participant

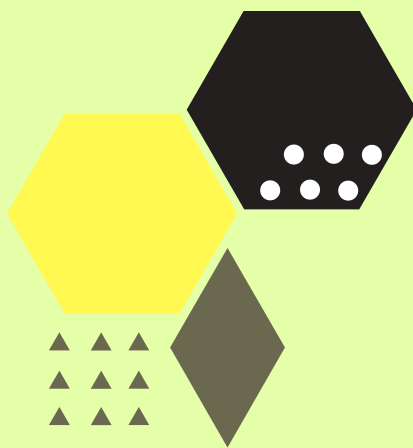
- 16-20: NT500/per participant

- 21-30: NT400/per participant

- 31-50: NT350/per participant

- 51-150: NT300/per participant

- Above 150: NT250/per participant



CONTACT US:

TAMKANG UNIVERSITY CHINESE LANGUAGE CENTER (TKUCLC) TAIPEI CAMPUS

NO.5, LN. 199, JINHUA ST.,
DA'AN DIST., TAIPEI CITY 10650, TAIWAN (R.O.C.)
TEL: +886-2-2321-6320
FAX: + 886-2-2321-4036

TAMSUI CAMPUS

No. 151, YINGZHUAN RD.,
TAMSUI DIST., NEW TAIPEI CITY 25137, TAIWAN (R.O.C.)
TEL: +886-2-2621-5656 #3630



clc@clc.tku.edu.tw



TKU Chinese Language Center



<http://www.clc.tku.edu.tw>



TKUCLC

